



*Starship
Sydney*



Congratulations ON YOUR ENGAGEMENT!

**STARSHIP SYDNEY OFFERS A SPARKLING
HARBOUR BACKDROP TO COMPLEMENT YOUR
UNFORGETTABLE WEDDING DAY**

Thank you for your enquiry regarding Starship Sydney
for your forthcoming wedding.

This stunning all glass boat is really something very special.
Surrounded by 3.5 metre floor to ceiling glass, you and your guests
experience uninterrupted panoramic 360 degree views from all levels.

Offering formal dining for up to 350 guests and cocktail parties
for up to 950 guests it also allows complete privacy on your
wedding day as your reception is the only event on board.



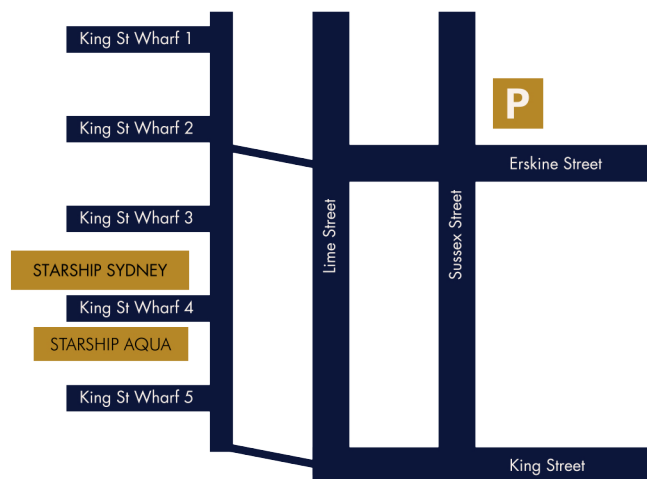


INSPECTIONS & PRICING

To book a guided inspection with our wedding coordinator or to discuss your upcoming event please contact our office:

*Monday - Friday: 9am - 5pm
Late Night Thursdays, Saturdays & Sundays
by appointment*

HOW TO FIND US IN DARLING HARBOUR



OVERVIEW OF FEATURES

- ✓ **SPACIOUS** - Starship Sydney features three, spacious high ceilinged and expertly planned levels. Including unique features such as a columnless design and free flowing spaces.
- ✓ **STABLE & QUIET** - The latest in nautical engineering used on Starship Sydney - providing unparalleled quiet cruising with remarkable stability.
- ✓ **PRIVATE BRIDAL ROOM** - Ideal for a quiet and private retreat, the spacious room has lounges, flat screen and mini bar (also suitable as a green room).
- ✓ **EXPERIENCED STAFF** - Our well trained professional team has been managing events on Sydney Harbour for nearly 30 years. We are experts in every aspect of every event.
- ✓ **SPECTACULAR VIEWS** - Enjoy 360 degree unobstructed views of the magnificent Sydney Harbour from all levels. All windows are UV glare resistant.
- ✓ **LED TV'S** - The vessel includes multiple flat screen LED TVs and a wireless PA system. Projectors, advanced sound production and more available on request.
- ✓ **AIR CONDITIONED** - Powerful, ducted air conditioning, whisper quiet outlets seamlessly and discreetly integrated into the architecturally designed ceiling, resulting in no visible obtrusions.
- ✓ **COMPLETE PRIVACY** - During your event you will have complete and exclusive use of the vessel. Your privacy is guaranteed.
- ✓ **HYDRAULIC LIFT** - Perfect for product launches and unveilings, the hydraulic floor lift can be used for revealing products up to the size of a car or boat.
- ✓ **STREAMLINED DESIGN** - Starship Sydney has been designed by the highly awarded architect William Smart of SD Studios with a high level of attention to detail.
- ✓ **WHEELCHAIR AND LIMITED MOBILITY FRIENDLY** - Access to Starship Lounge, bathrooms, main dining deck. Special requirements apply, please discuss with event manager prior to event.
- ✓ **MULTIPLE BARS** - Enjoy a beverage from one of the multiple bars spaced throughout the vessel.
- ✓ **BATHROOMS** - For your convenience bathroom facilities are located on 2 levels of the vessel with discreet access at the rear of the vessel.



Our Wedding Package

Our aim is to make your planning as easy as possible so we have included these items to do just that

- ✓ 5 hours continuous cruising on Sydney Harbour
- ✓ 5 hour beverage package
- ✓ 3 course or buffet menu
- ✓ Canapés on arrival served on the lounge deck
- ✓ Centrepieces & tea lights on each table
- ✓ White linen cloths & napkins with napkin rings
- ✓ Custom made Diamond Chairs
- ✓ White ceiling draping
- ✓ Custom-made white bridal and cake table
- ✓ Professional DJ or 3 hour Hire Photobooth
- ✓ Complete privacy, exclusivity and access to all levels of the vessel
- ✓ Use of VIP bridal suite
- ✓ Professional reception manager to look after you & your guests
- ✓ Surround sound system & microphone
- ✓ Professional wedding co-coordinator to assist in your planning
- ✓ Placement of name cards & bonbonniere
- ✓ Use of wheelchair lift if required for access up and down stairs



TOUR OF STARSHIP SYDNEY



Main Dining Deck

AT 450 SQUARE METRES, STARSHIP SYDNEY HAS THE LARGEST OPEN PLAN DECK SPACE AVAILABLE ON SYDNEY HARBOUR.

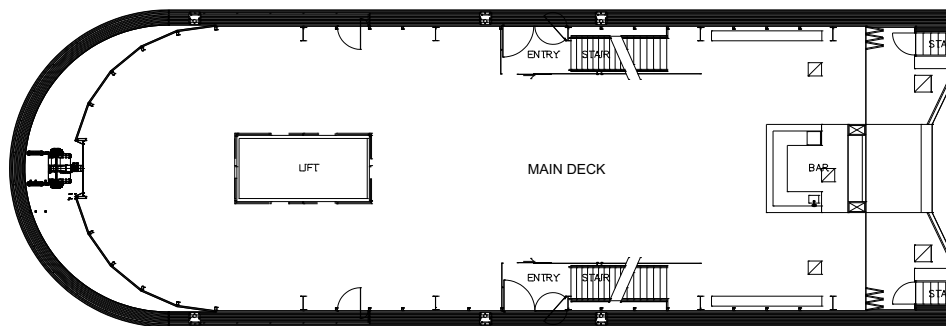
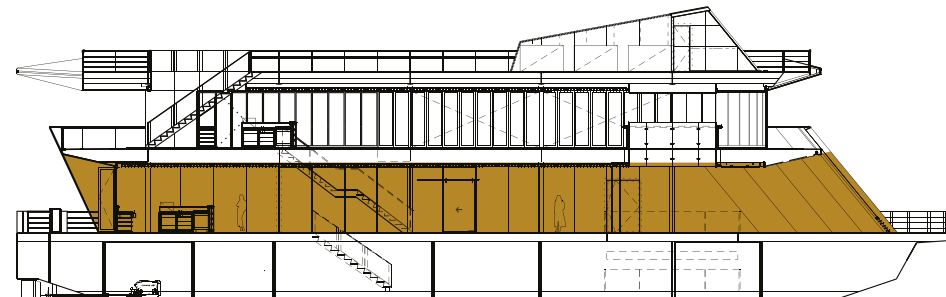
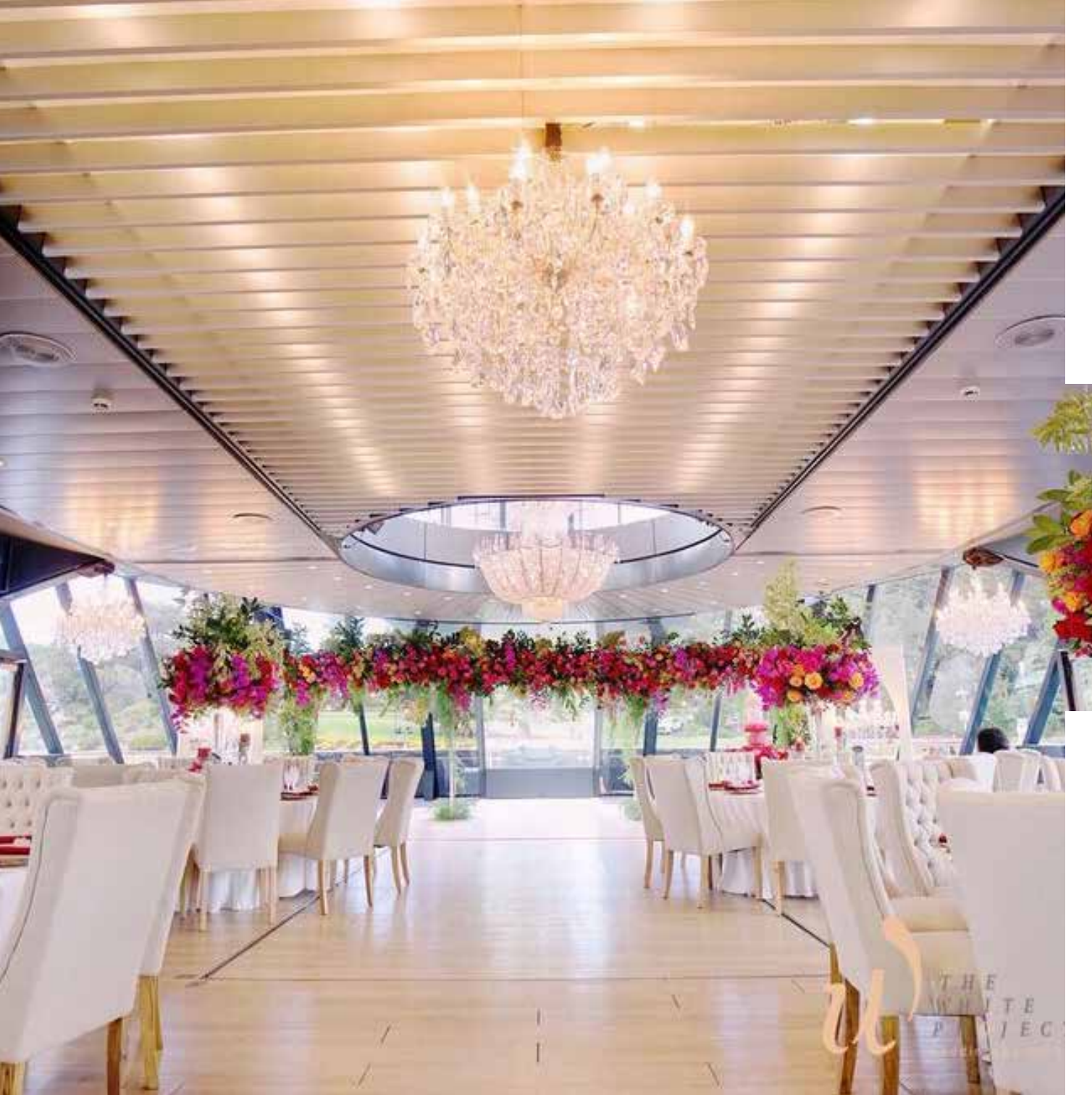
The large surround glass windows are tinted to reduce glare, and improve visual colours.

The ceiling & window height on this level is an impressive 3.5 metres and there is an amazing open glass void reaching through to the 2nd level above the dance floor.

Finishes are soft & understated. A modern ash wood floor sweeps through the dining area from bow to stern and allows for the perfect dance floor of any size; soft perimeter lighting adds to the ambience

The bar in the main dining area has minimal impact without bottles or glasses exposed to hinder the view. All items are concealed under benches and the bar is quietly lit.

Air conditioning and heating add to passenger comfort.



MAIN DECK FEATURES

- Seating up to 350 (with dance floor)
- Seating 350 to 390 (without dance floor)
- Oval tables (10 to 12 guests)
- Cocktail party 950 guests (throughout)
- 3.5 metre ceiling height
- Ashwood dance floor through centre
- Surround glass

- 3 phase & 240 volt power
- 7 LED screens, USB inputs
- Sound system, microphone, DVD, iPod
- Integrated hydraulic lift 6 x 3m, 2500kg
- Full bar



Starship Lounge

YOUR HARBOUR JOURNEY ON BOARD STARSHIP SYDNEY WILL BEGIN IN THIS CHIC MODERN SPACE

With its imported Italian leather lounges, all weather surround deck area, soft lighting, and panoramic views, it sets the right mood for any event.

This dedicated, informal but elegant area is your introduction to Starship Sydney after boarding.

From the impressive initial impact of its exterior, we invite boarding guests to this sophisticated lounge level. The colour palette is clean, modern & nautical.

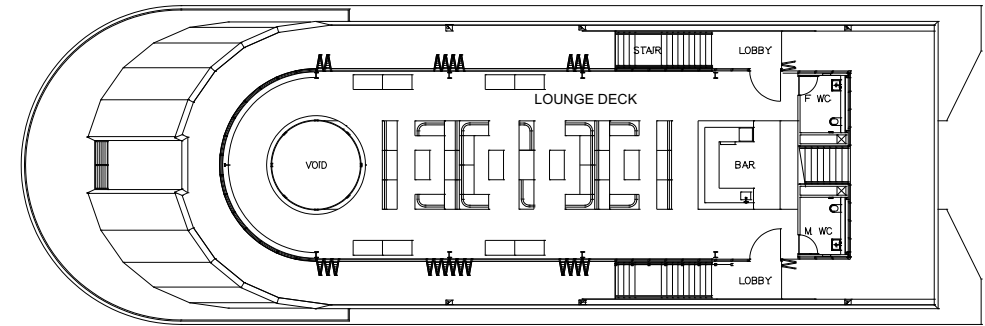
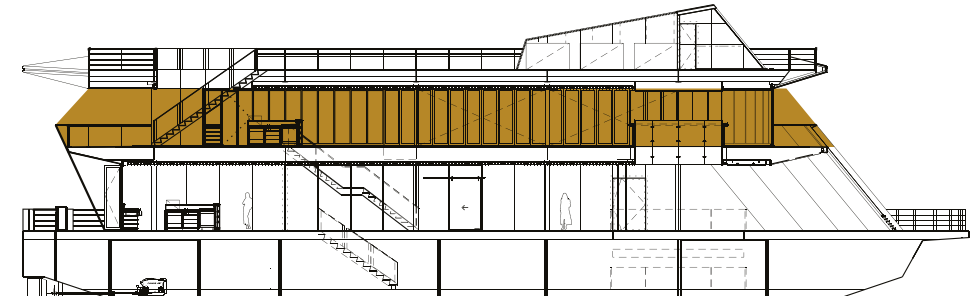
Soft perimeter lighting covers the area and a stream of soft lights shine above the rooms centre & from behind the bar.

Ceiling height here is also a luxury at nearly 3 metres.

Glass bi-fold doors open to the 2 metre wide covered deck and can be opened or closed depending on the weather.

Towards the front is the glass void and circular bar that allows viewing access to the main deck area below.

A wide, but subtle staircase is situated on either side for easy access to the dining area or a rear staircase which extends to the open sky deck.



STARSHIP LOUNGE FEATURES

Dedicated lounge area

Alternatively, formal seated dining for 120

Glass bi-fold doors open onto surrounding outside deck

3 metre ceiling height

Microphone, LED screens and audio

3 phase and 240 volt power outlets

Outside smoking area

Glass viewing void / circular bar

Male and female toilets

Full bar

No pillars to obstruct movement or view

Open Sky Deck

PERFECT PANORAMIC VIEW OF SYDNEY HARBOUR.

Where better to see Sydney Harbour than from this open deck, with unobstructed panoramic elevated views in every direction.

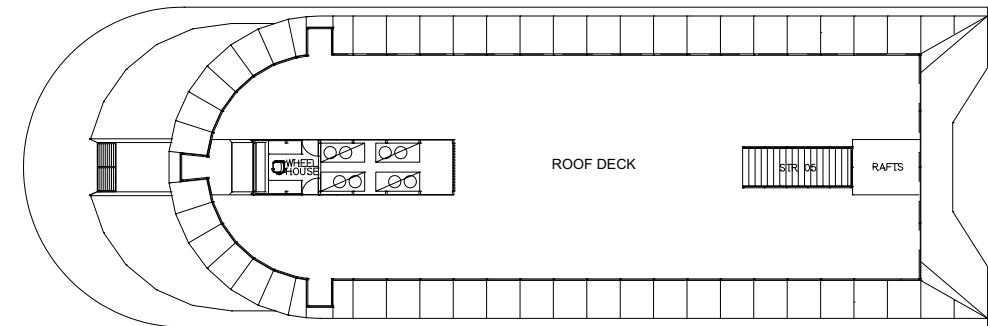
Rising 10 metres above the water level, Starship Sydney's Open Sky Deck offers a versatile entertainment space.

An expansive open area that can be modified to suit a number of purposes, including a spectacular wedding ceremony.

Chic cafe tables & chairs and cocktail bar tables with high stools add to the informal outdoor space.

An independent sound system allows the creation of an entirely different mood from the other levels allowing passengers an opportunity to relax and unwind.

The wide open staircase at the rear of the deck allows passengers to easily move back and forth between levels.



STARSHIP SKY DECK FEATURES

Spectacular location for your Harbour Wedding
Ceremony Cocktail tables and Occasional seating
Marquees and other structures permitted

Subtle lighting
Separate Bose sound system
Microphone
Smoking area

Bathrooms and VIP Lounge / Green Room

**ULTIMATE LUXURY AND ATTENTION TO DETAIL ALLOWING
YOUR GUESTS TO CRUISE THE HARBOUR IN COMFORT**

Starship Sydney has a number of bathroom facilities located on multiple decks. The main bathrooms are located below deck (accessed via the Main Dining Deck) with secondary facilities located on the Starship Lounge.

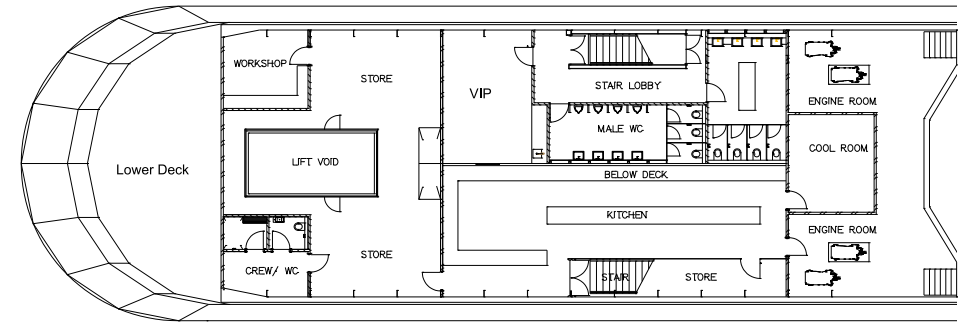
All bathroom facilities are modern, clean and spacious. They are stocked with quality hand wash products and have multiple Dyson Airblades.

Starship Sydney also has a private and spacious bridal suite Lounge or Green Room which features comfortable lounges and banquette seating, LED TVs and is lockable and completely secure.

The VIP or Green Room can also be attended by a personal attendant if required.

Access to main bathroom facilities and VIP room is via a wide staircase which can cater for those in a wheelchair or with limited mobility (must be organised with events manager prior to event).

**VIP ROOM: 30 SQ M (6 X 5 METRES)
BATHROOMS: 15 FACILITIES**



BATHROOMS FEATURES

- Multiple accessible mirrors
- Contemporary facilities
- Dyson Air Blades
- Corian bench tops
- Quality hand wash products

VIP / GREEN ROOM FEATURES

- Lounges and banquette seating
- LED TVs
- Lockable
- Exclusive and private
- Personal VIP attendant
- Large full length mirrors