





WELCOME TO SHADOW

Shadow combines cutting edge Italian design, luxurious styling, sophisticated engineering and high performance to create a vessel desired by all those who look upon it.

It delivers a sleek look, yet offers an elegant, socially-oriented environment, giving guests the opportunity to relax amongst their friends and family.





EXPERIENCE **SHADOW**

Shadow combines comfort, wide spaces and high handcraft quality, with sophisticated interiors and an amazing light enclosure. Thanks to the lowered rails and the extra-large windows, the natural light comes inside on the main deck and in the guest cabins.

The main deck hosts a welcoming saloon where the onyx back-light wet bar with two modern leather sofas. Beyond the deck there is the kitchen and the wheelhouse.

The bedroom area can welcome eight people. It has two main cabins, one being the owner's quarters and the other a VIP suite.

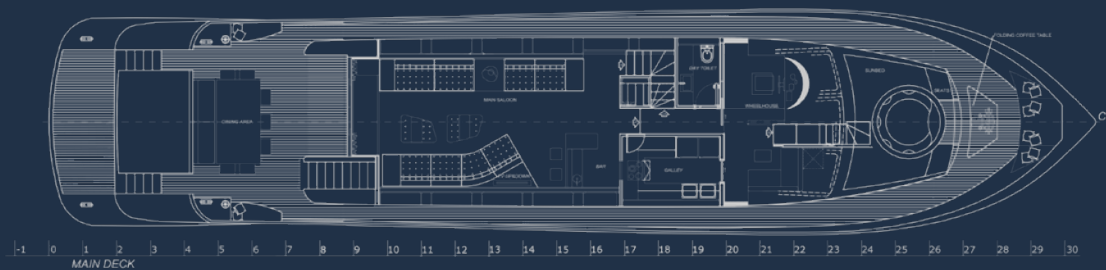
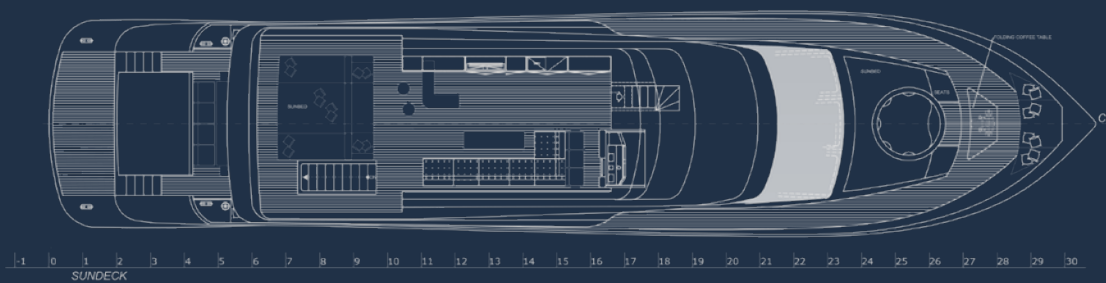
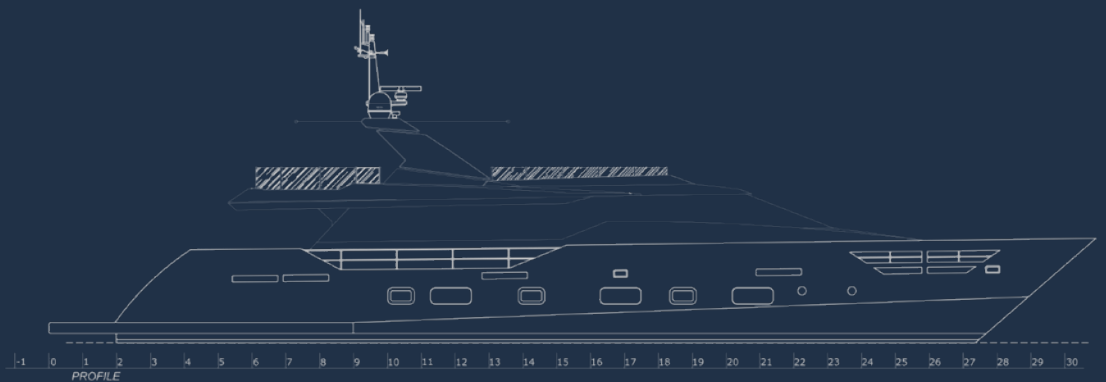
On the bow, with separate access, is the crew accommodation with a private bathroom that provides totally privacy for guests if they require.

The external areas are very spacious. On the main deck there is a wide user friendly area and a great teak and inox steel lunch table to welcome 10 people. The wide sundeck has an inside/outside access staircase and a raised pilot house, sofas, sun-seat and a bar. Two (2) retractable awnings also provide shade if required. On the bow you'll find a sun-seat and a luxury Jacuzzi,





 SYDNEY



SPECIFICATIONS

Shadow is a super luxury yacht around 100 feet long equipped with two powerful CAT C 32 ACERTs of 1850 HP each. It has a cruising speed of 20 knots and a max speed of 27 knots.

Built by Italian Sea Group in Massa (Italy) in 2013, this vessel's sophisticated exterior design and engineering are the work of Tecnomar. Her interior is also styled by the Tecnomar team, who are also responsible for the entire engineering package.

It has a composite hull with a composite superstructure.

PERFORMANCE

Cruising Speed	20 knots
Max Speed	27 knots
Engine	Two (2) caterpillar C32 1343 KW
Gear Reduction	ZF 2070 V drive i-2, 5:1
Propeller	Two (2) Screw propellers, fixed pitch
Engine Specifications	
Brand	Caterpillar
Year Built	2013
Model	C32 ACERTs (1850HP)
Type	Inboard
Location	Port and Starboard
Drive Type	Direct Drive
Power	1343 KW

OVERVIEW

Built	2013
Build Location	Massa, Italy
Current Location	Rushcutters Bay, Australia
Hull	Composite Fibreglass/GRP
Hull Shape	Deep Vee
Builder	Italian Sea Group
Flag of Registry	Sydney, Australia
YW#	79271-3049775

Dimensions

Length	98'5 feet (30.6m)
Beam	23 feet (7m)
Minimum Draft	7'8 feet (2.4m)
Maximum Draft	8'5 feet (2.6m)
Displacement	110 tonnes
Bridge Clearance	28'5 feet (8.7m)

Additional Specs, Equipment and Information

Bow Thruster	15 kW electric (285 tci)
Stern Thruster	15 kW electric (285 tci)
Generator Port	Koheler 40 kW
Generator STBD	Koheler 33 kW
Fuel Tanks	Three (3) Stainless steel tanks (8000 Litres) <ul style="list-style-type: none">Daily (4320 Litres)Centre storage of (900 Litres)Forward storage (2780 Litres)
Fresh Water	Stainless steel tank (3000 Litres)
Gray/Black Water	Stainless steel tank (1100 Litres)
Battery charger	Two (2) 240AMP One (1) 60AMP
Sea Water Pump	Three (3)
Electric Bilge Pump	One (1)
Hot Water	Two (2) 80 Litre tanks
Fresh Water Maker	SELMAR 250 Litres/Hour
Manual Bilge Pump	One (1)

ACCOMMODATION

Double Berths	Two (2)
Twin Berths	Two (2)
Cabins	Four (4)
Crew Quarters	One (1) - Sleeps four (4)
Bathrooms	Six (6)

ELECTRONICS

Plotter	Furuno Nevnet
Wind speed and direction	Furuno F150
Radar	Furuno
Depthsounder	Furuno F150
GPS	Furuno GP150
VHF	Simrad RS12
Repeater(s)	Furuno TZ14
Compass	Riviera
Autopilot	Simrad
Computer	Tecnonautica
Log Speedometer	Furuno F150
Generator	One (1) 33Kv and One (1) 40 KV Kohler
Shore power inlet	One (1)
Inverter	Master Volt
Electrical Circuit	220V

Electrical Equipment

Entertainment	CD player Six (6) TV sets Bose DVD Player Bose Speakers (incl. in bedrooms)
Functional	Navigation center Cockpit speakers Radar Detector Radio

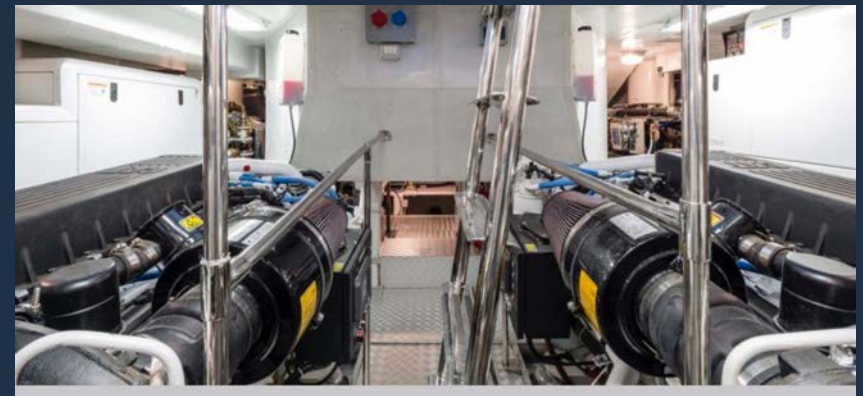
EQUIPMENT

Inside Equipment

Microwave oven
Marine type Freezer & Fridge with the maximum possible capacity
Four (4) Fridges for Beer/Drinks
Two (2) Ice Makers
Electric oven
Microwave oven
Dishwasher
Stainless steel double sink
Stainless steel extraction hood
Washing machine
Air conditioning – Condaria 300000btu
Heating

Outside Equipment

Swimming Ladder
Radar reflector
Cockpit cushions
Liferaft
Safety Rafts for 100
110 Lifejackets
Teak cockpit
Cockpit table
Teak sidedecks
Cockpit shower
Hydraulic Gangway
Total Liferaft Capacity: 32
Four (4) Electric Windlass
Covers
Bimini Top





DINING

Shadow has had award winning/Michelin chefs aboard creating three course sit down menus for up to 10 people and canapes for larger gatherings from its fully equipped kitchen. With deep freezers and fridges holding maximum possible capacity, fresh water maker, an oven, microwave, dishwasher, cooking range and extraction hood are all the necessities and luxuries one needs.

ENTERTAINMENT

Shadow's impressive leisure and entertainment facilities make her the ideal charter yacht for socialising and entertaining with family and friends. Cushioned chairs and day lounges are perfect for lazing about or plunging into the heated outdoor spa as sunset falls. For those wanting more action then head to the stern to jump from the diving board or collect your paddle board or kayak stored in the spacious double garage.

POWER

A true high performance yacht which combines advanced engineering and traditional craftsmanship to deliver excitement and tranquility in equal measure. Below the deck are two Caterpillar diesel engines, combining a total power of 3700 HP that bring Shadow to life.



Shadow offers an elegant and comfortable living environment with a sundeck and lounging area, complete with a large semi-circular sofa.

At the stern is a dining deck that grants the diners an unforgettable dining experience with a sea view or a night sky full of stars to savour along with the meal.

Throughout the vessel are luxurious spaces that complement one another to create a seamless journey.

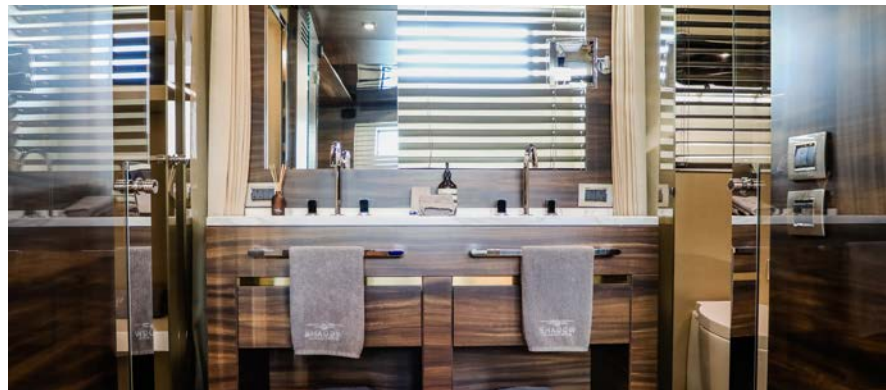




MAIN BEDROOM

The main bedroom consists of a king-size bed, a fold-down bed, two cupboards with reading lights, drawer and locker, one piece of furniture with two lockers on the port side, sofas with two cupboards and reading lights, one piece of furniture with vanity, mirror and small armchair, a private safe, one wall-mounted LCD TV, decoder and audio system.

The private bathroom adjacent to the room includes two (2) basins on top of a four-locker piece of furniture with mirror on top, shower cabin with plexiglass door, adjustable shower, TECMA lavatory and bidet.





VIP BEDROOM

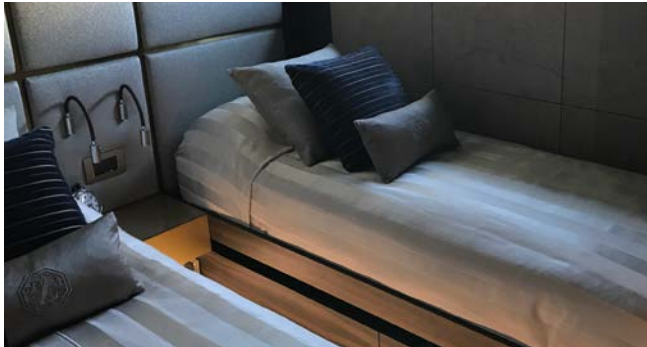
The VIP cabin offers a queen-size bed with drawers underneath, a fold-down bed, a private safe, two cupboards with reading lights, a drawer and locker, a wardrobe for long garments, a styled bench at the foot of the bed, a wall-mounted LCD TV, decoder and audio system.

Attached to the room is a private bathroom, complete with sink on top of a twin-locker cupboard, mirror, shower with plexiglass door and TECMA lavatory.



GUEST BEDROOMS

There are two (2) guest cabins, both with single beds and drawers underneath, a fold-down bed, one cupboard with two reading lights and drawers, one wardrobe for long garments, a wall-mounted LCD TV, decoder and audio system.



ADDITIONAL BATHROOMS

Two private bathrooms, complete with sink on a twin-locker piece of furniture with mirror on top, shower cabin with plexiglass door, adjustable shower and TECMA lavatory.



MAIN CABIN

Designed by the Tecnomar and customised on ship-owner request, Shadow combines comfort, wide spaces and high handcraft quality, with sophisticated interiors and an amazing light enclosure. Thanks to the lowered rails and the extra-large windows, the natural light comes inside on the main deck and in the guest cabins. The main deck hosts a welcoming saloon where the onyx backlight wet bar with two modern leather sofas. Beyond the deck there is a kitchen where the likes of Australian Michelin chef Matt Moran has treated guests to a world-class dining experience.

