

# SEA RAES





# CHARTER LOCATIONS

Sea Raes spends the spring/summer season on the shores of Sydney Harbour allowing charter guests to relish the city from the sea, or explore the idyllic waterways of Pittwater and the Hawkesbury River.

From June each year, follow Sea Raes to warmer parts of the country for a unique Whitsundays charter experience.

## SYDNEY

Enjoy snorkelling, as well as access to local natural pools & external water sport activities such as diving and fishing.

- Athol Bay • Farm Cove • Sydney Harbour • Sugarloaf Bay • Quarantine Bay • Taylor's Bay • Rose Bay •

## PITTWATER

Experience Australia's natural habitat, surrounded by wildlife, native fauna and flora just metres off the vessel. Speak with your Stew to organise a beach side picnic.

- Broken Bay • Hallets Beach • Cottage Rock • Jerusalem Bay • Yeoman's Bay • Flint Bay • Steel Bay • Scotland Island •

## WHITSUNDAYS

Water sports such as jet-skiing, snorkelling and paddle boarding are available throughout your charter in the Whitsundays, as well as beach side dining options.

- Molle Island • Whitsunday Island • Whitehaven Beach • Turtle Bay • Mackerel Bay • Manta Bay • Butterfly Bay •

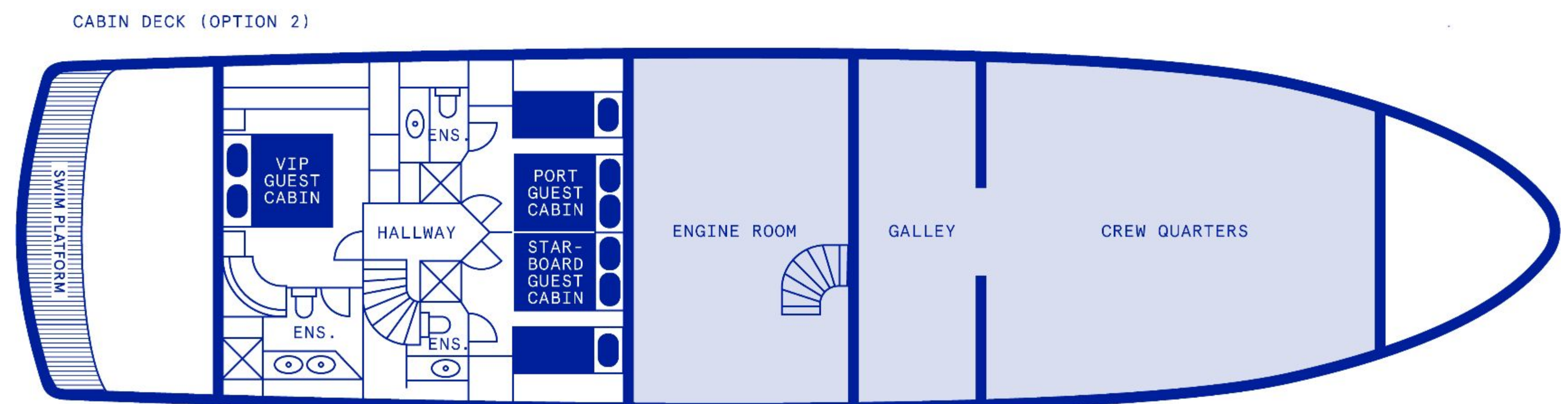
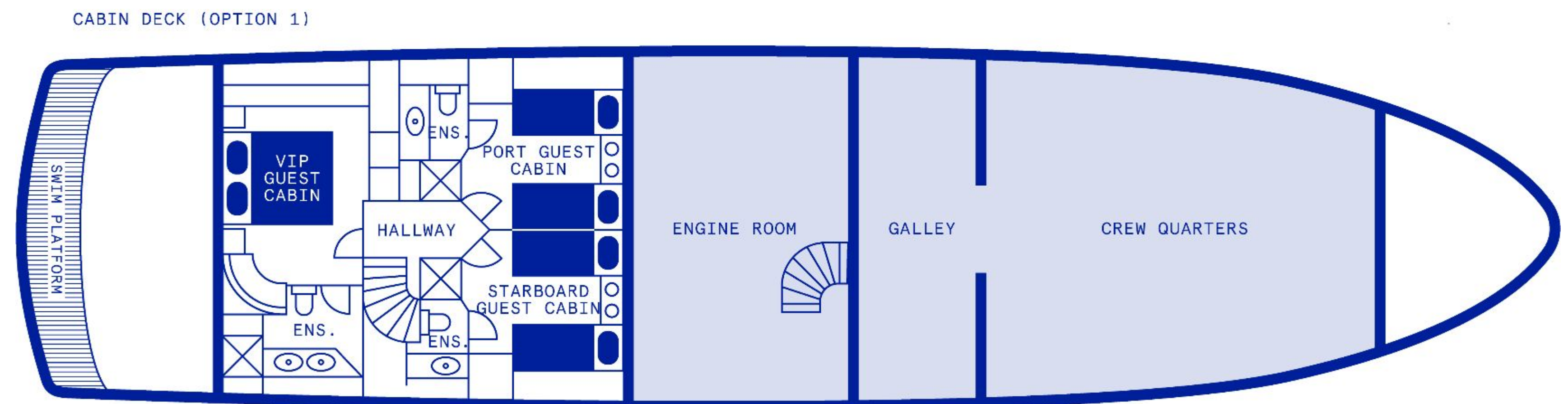
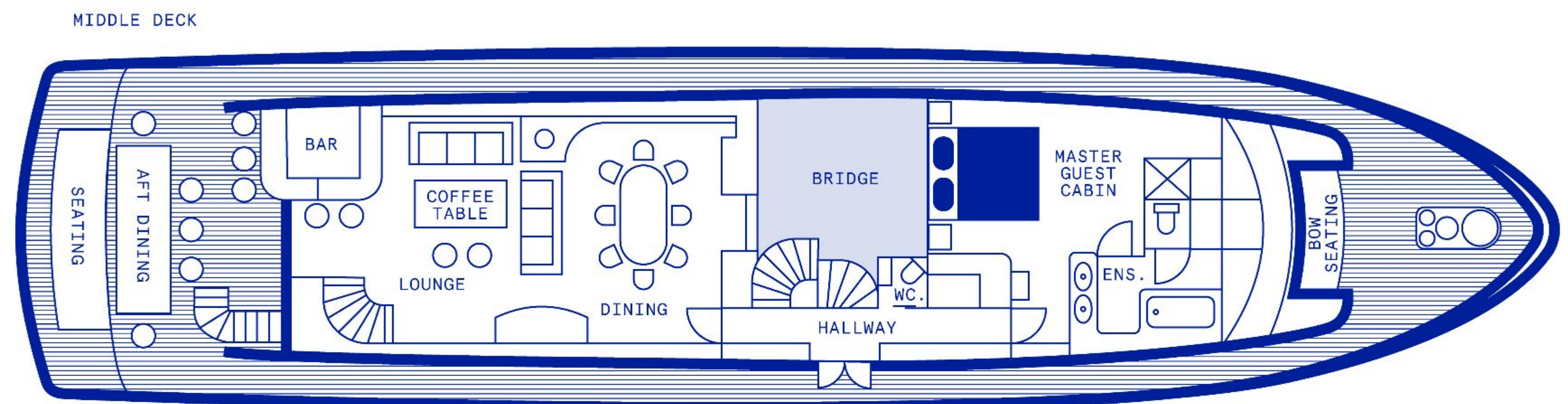
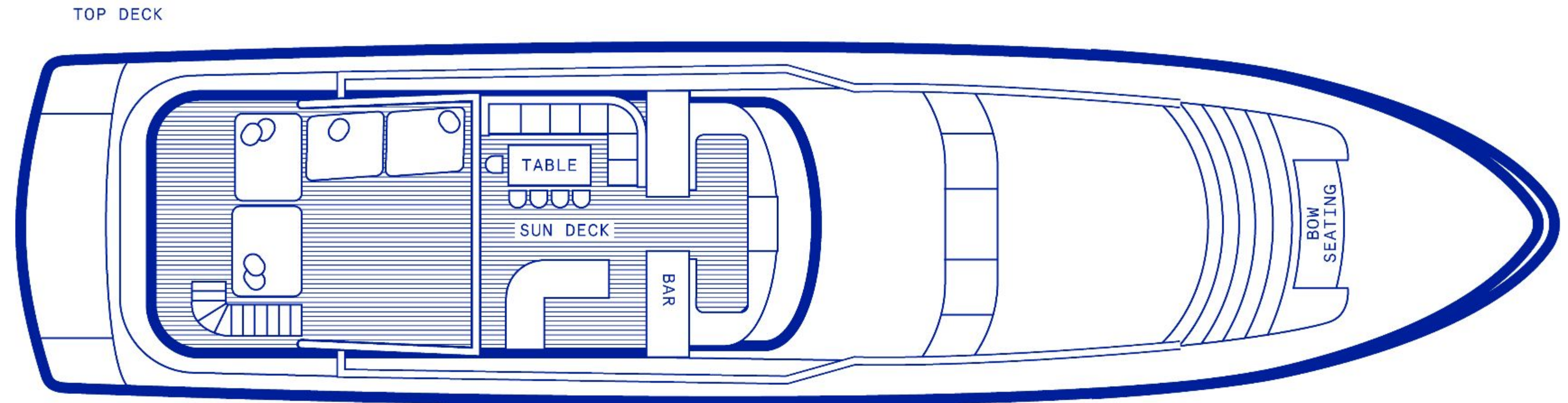


# GUESTS

With 2 suites, 2 twin cabins and single cabins. Sea Raes is designed to accommodate up to 4 couples, and can allow for up to 10 guests overnight when required.

Capacity for events is 30 guests.

*All details are considered by your full time crew on board who will be looking after your every need. Crew include, Captain, First-officer, Chef, Chief Stewardess.*

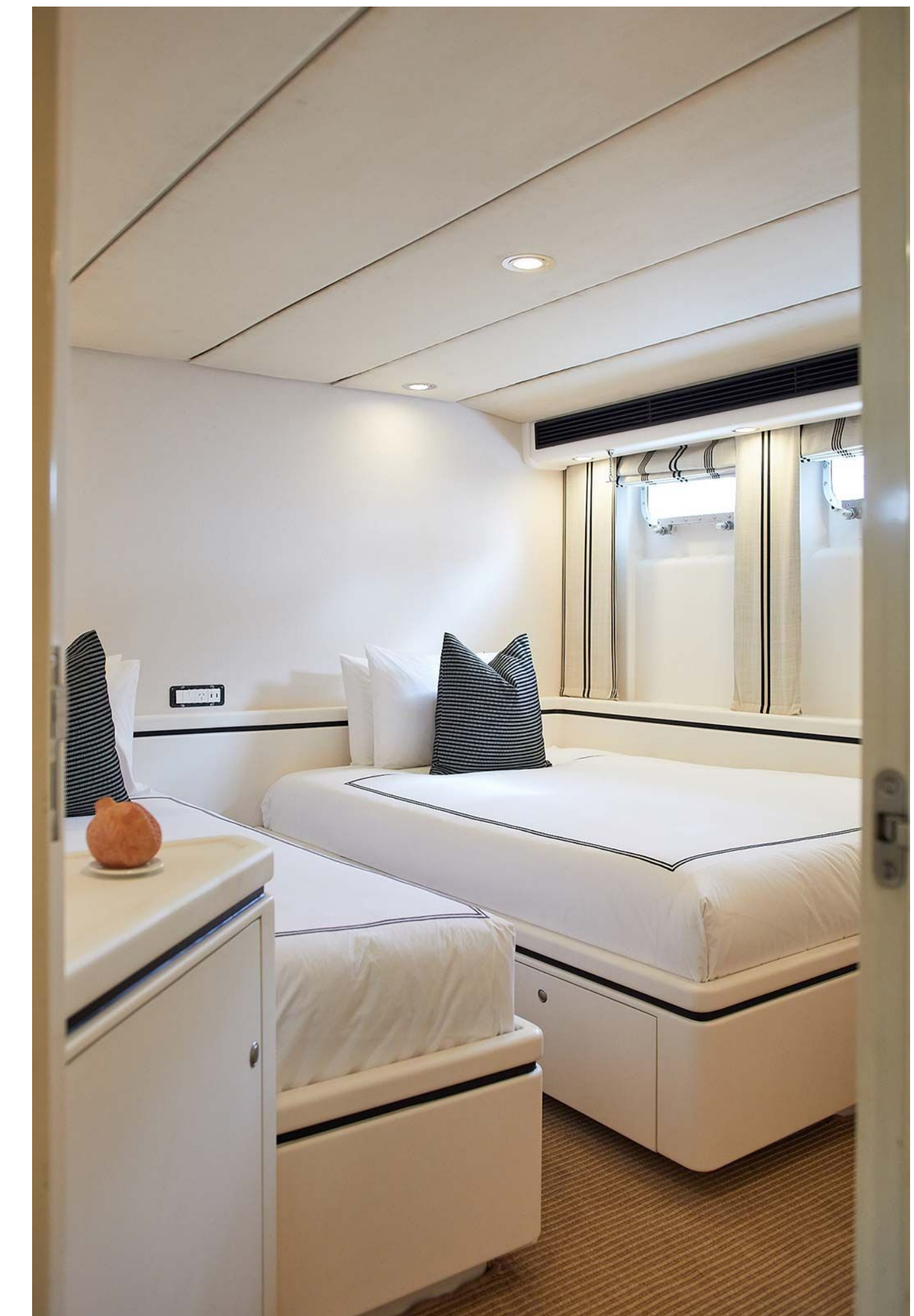
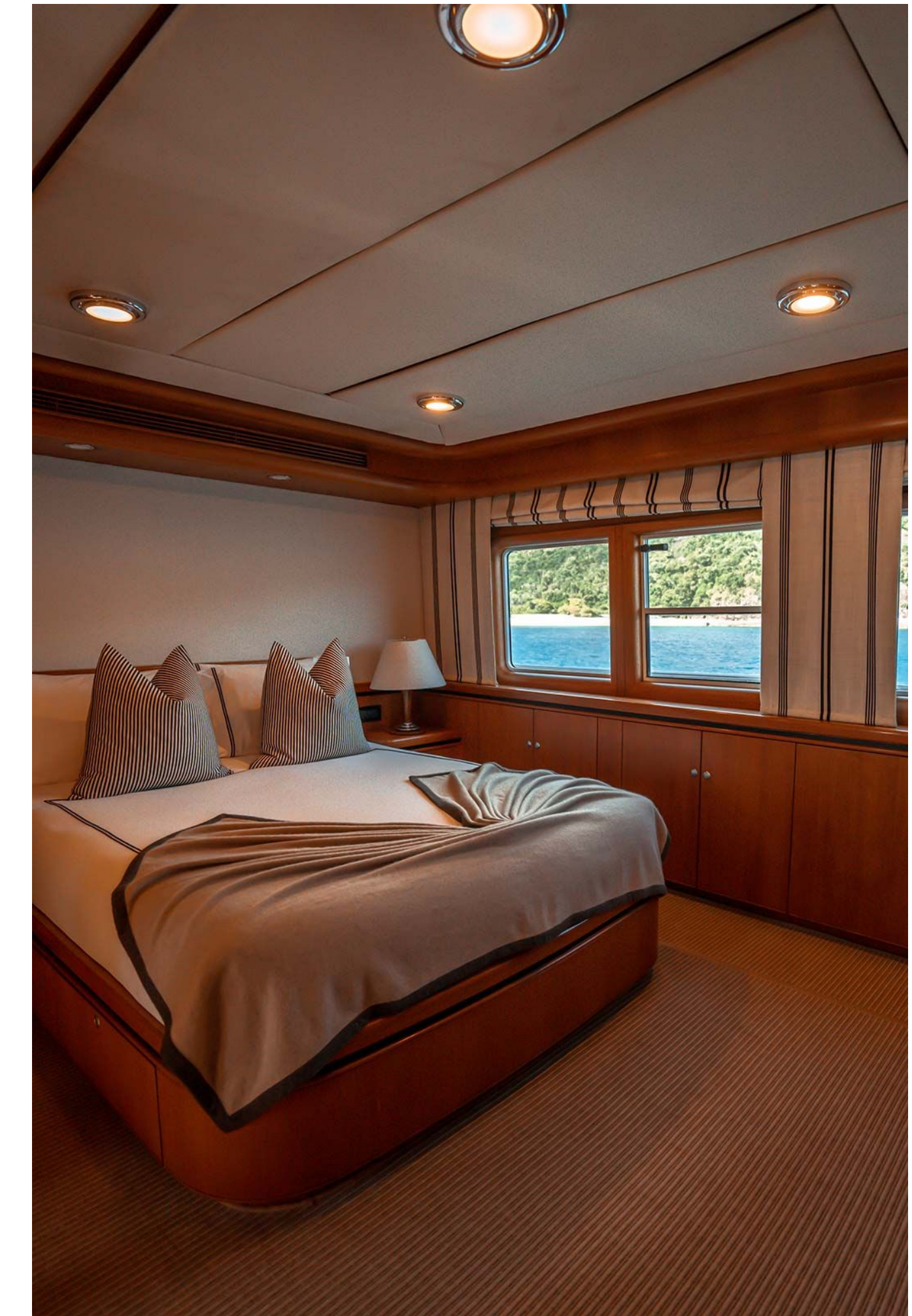


# FACILITIES

- Master cabin with king size bed and ensuite bathroom with bath
- VIP cabin with king size bed and ensuite bathroom
- Two twin cabins each with a single / single or single / double setup, both with their own ensuite
- All cabins have top of the line LED screens
- The Salon has the latest 49" QLED Samsung screen with full BOSE surround sound, plus a full wet bar.
- The aft-deck has a 50" LED screen and has its own sound system, all app/bluetooth controllable
- Sundeck with a full wet bar and BBQ area

# DETAILS

- 31m Length overall (LOA)
- 6.2m Beam
- 2.2m Draft
- Cruising speed 10 knots
- Range 3,800 nautical mile





## OVERNIGHT CHARTER

For Friday and or Saturday bookings, a 2-day minimum charter is required. She may be reserved for a single night Monday through Thursday.

- 24-hour experience is AUD \$18,000
- An overnight experience with two full days is AUD \$25,000
- Two nights is AUD \$32,000
- Three nights is AUD \$48,000
- Five nights is AUD \$80,000

The above pricing includes all food and beverages for 10 guests, with additional tailored food and beverage menus available at an additional cost. Menus will be further curated and arrival details customised upon both quotation and booking. We will aim to customise your arrival and departure times to your requests when and where possible.

Additional guests or visitors onboard may incur a fee.

*Pricing is noted for non-peak seasons only & ex-GST. Peak rates applicable across certain public holidays.*

## NEW YEAR'S EVE

From \$130,000 + GST all inclusive for 10 guests.

Up to 30 guests for event charter during this time.

# DAY CHARTER

For those wishing to enjoy Sea Raes just for the day, an hourly rate of AUD \$2,000 + GST applies, for a minimum 4-hour period, for up to 10 guests.

This includes starting canapé menu mentioned below, starting beer, wine and spirit package, marine crew, waitstaff, wharf fees, the boat's onboard equipment, some water toys depending on time and location, and the vessel.

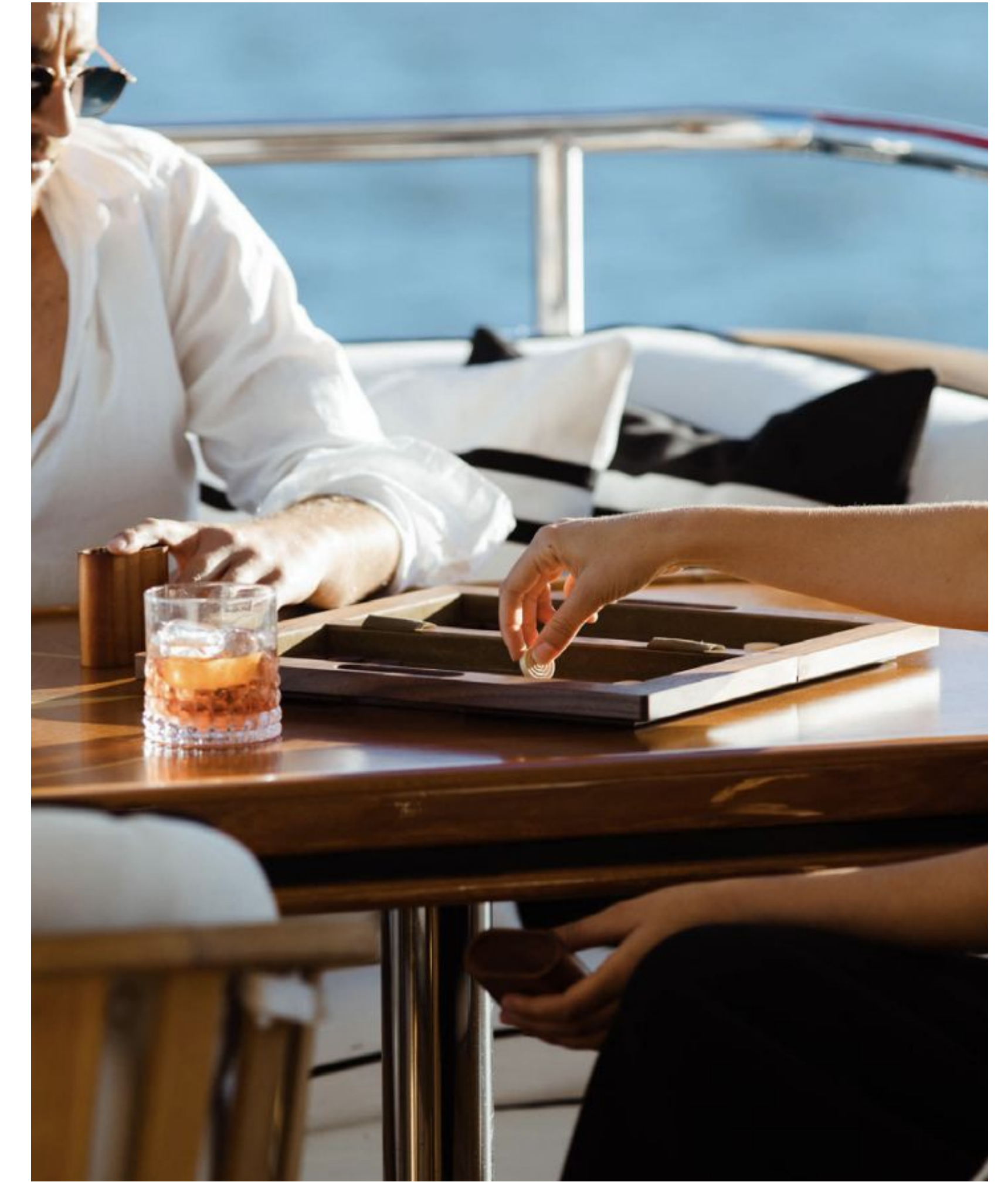
\$400 per person + GST for any guest after the 10 all inclusive.

A maximum of 30 guests is permitted and all purposes of charter must be disclosed prior to acceptance of the booking.

External catering and staffing are permitted with Sea Raes Management approval, or alternatively the Sea Raes crew and Sea Raes Event Manager can be available to assist in planning your special day onboard. Requirements and event management fees can be discussed based on the nature of the event.

*Day charters are available midweek only.*

*Day charters on Friday, Saturday or Sunday are on request.*



# COMMERCIAL CHARTER

Sea Raes serves as the perfect backdrop to your brand's next special moment. Brand alignment is required in advance, and a commercial usage fee is applied in addition to the traditional booking fees for all non-leisure experiences.





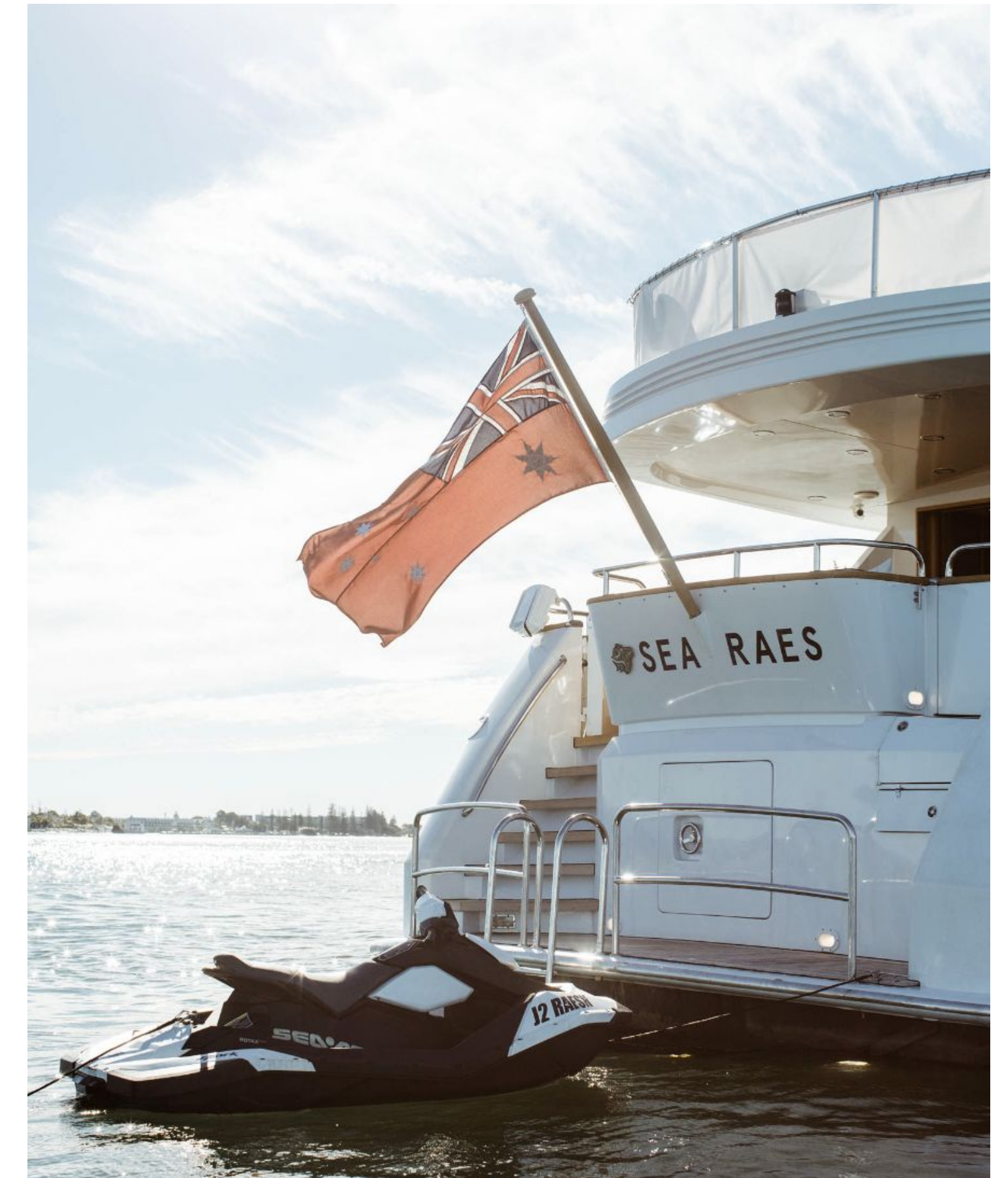
# WATER TOYS

For those wanting to get a little adventurous while in holiday mode, there are water toys available.

Water toys include:

- Custom built 5.5m tender
- 2 Seadoo sparks\*
- 2 SUPS
- Water skis
- Wake board
- 8 sets of snorkeling gear
- Assorted fishing gear
- Giant inflatable slide\*
- Giant inflatable trampoline
- Full ship width inflatable pool that is set up at the swim platform
- Lilly pad

*\*Slide is inclusive for 6 hour + charters.  
Seadoo's included for charter guests who hold their PWC license, which are also out of Sydney Harbour as this is not allowed.*



# ADDITIONAL INFORMATION

## DEPOSIT

To secure a 50% non-refundable deposit is required at time of booking, with the outstanding due 1 month from the boarding date. A rental agreement must also be exchanged.

## CHECK IN & OUT

We aim to customise your arrival and departure times based on your preferred experience, whilst working within our availability. Early check in, or later departure opportunities can be offered when and where possible. Your time on board is based on a 24-hour experience.

## CONFIGURATIONS

Sea Raes acts as your floating residence across 4 cabins, discuss with the team regarding the best configuration for your group or family.

## ADDITIONAL GUESTS ON BOARD

All pricing noted is for 10 guests, any additional guests for the day or evening may incur an additional fee.

## CANCELLATIONS & AMENDMENTS

All bookings are non-refundable. Charters are unable to be rescheduled in the event of rain or poor conditions. However, if the conditions are deemed unsafe by the captain, this will warrant a change of date or credit.

## CHARTER

*November - April*

Sydney Harbour & Pittwater

*May - June*

Gold Coast

*July - October*

Whitsundays & Airlie Beach

Additional locations may become available and can be requested for consideration.

## RELOCATION

During the Spring Summer season charters requesting M.Y Sea Raes to be in Pittwater rather than Sydney Harbour may incur a relocation fee.

## LOCATIONS

## PEAK PERIODS & PUBLIC HOLIDAYS

Peak rates apply over public holidays, Easter, Christmas, New Year's Eve & New Year's Day.

All peak & public holidays incur an additional 20% surcharge

## PRICING

All pricing noted is excluding GST and is in Australian Dollars.

*Pricing and availability are subject to change – accurate pricing will be discussed at time of quotation*

## FEEES

# DRIFT AWAY ON SEA RAES

